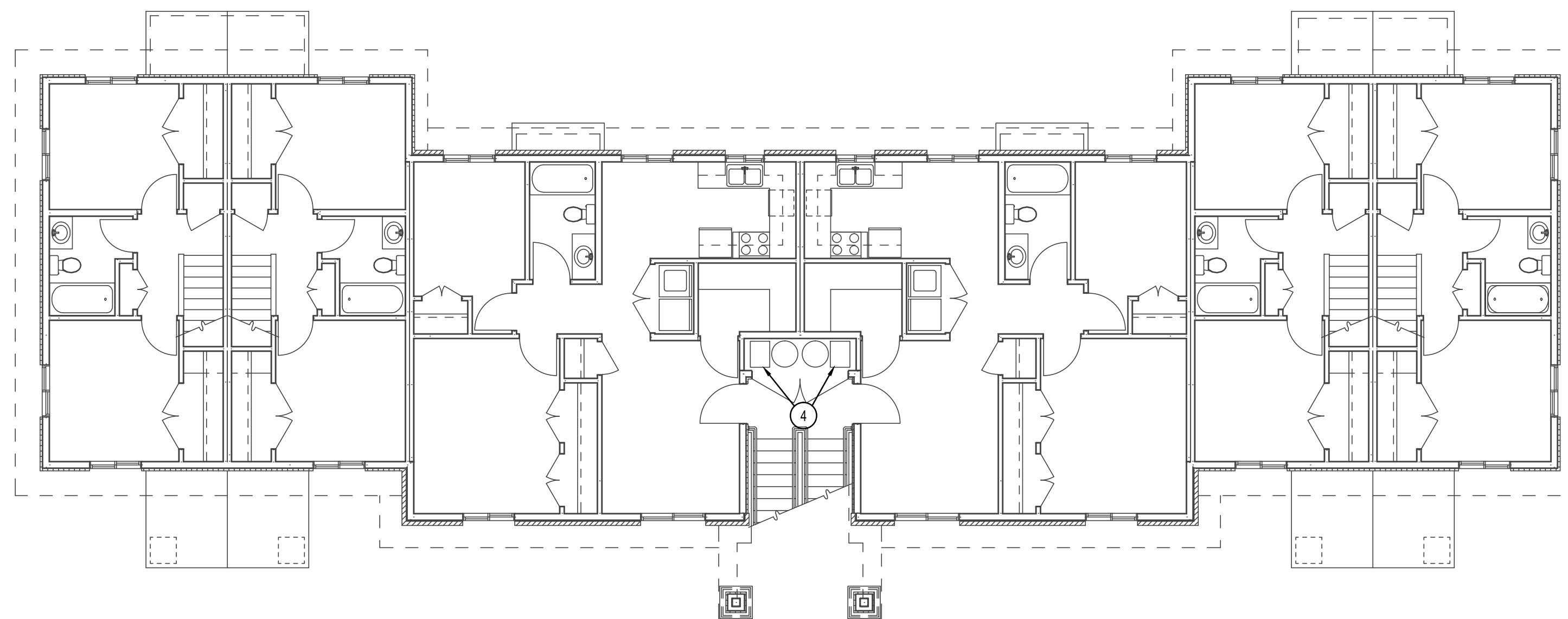
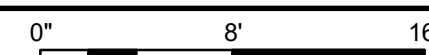


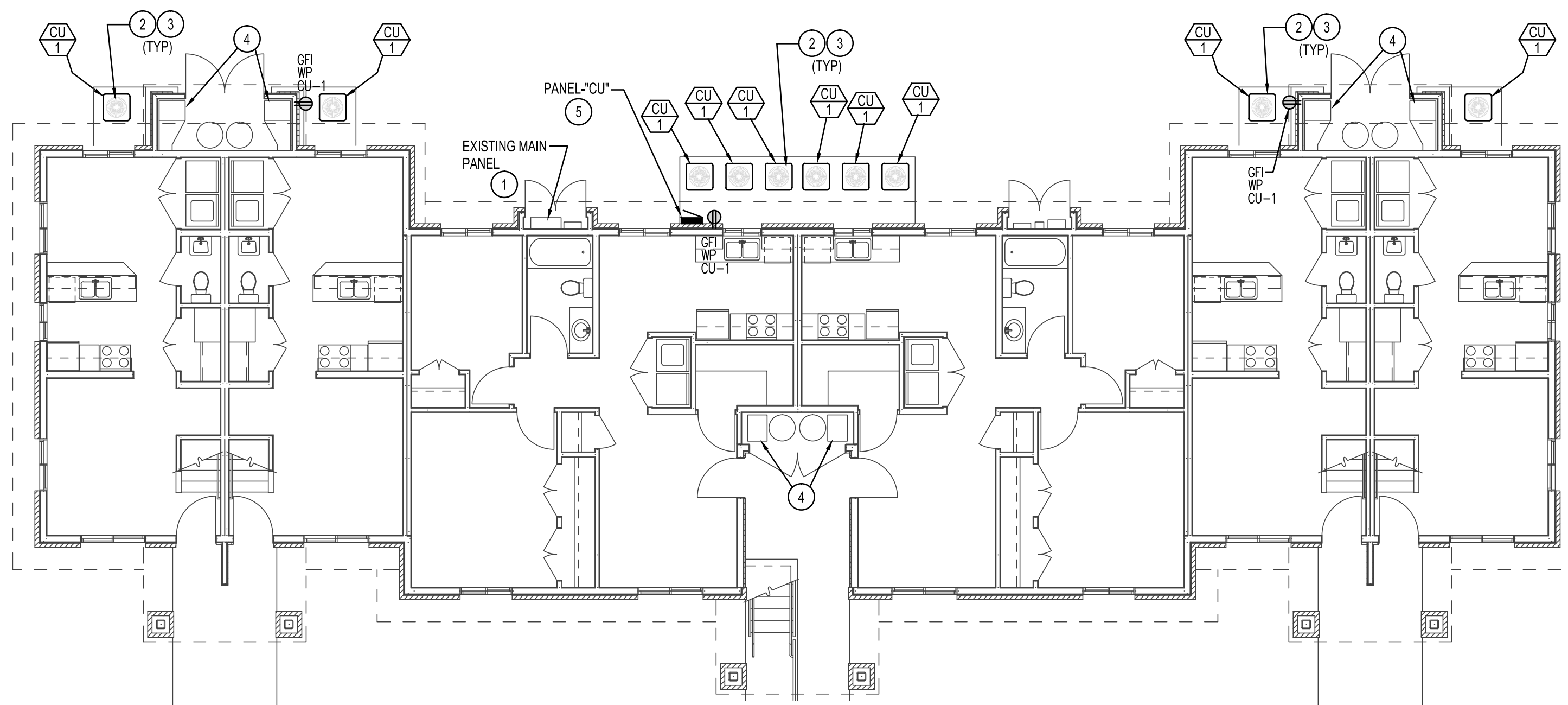
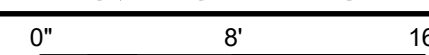
3RD LEVEL BUILDINGS #1,2,3,4,7,8,9,10,14 & 16 - POWER

SCALE: 1/8" = 1' - 0"



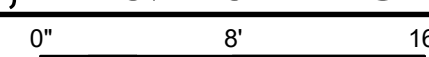
2ND LEVEL BUILDINGS #1,2,3,4,7,8,9,10,14 & 16 - POWER

SCALE: 1/8" = 1' - 0"



MAIN LEVEL BUILDINGS #1,2,3,4,7,8,9,10,14 & 16 - POWER

SCALE: 1/8" = 1' - 0"



KEY NOTES

- 1 INSTALL A 2" C, 3-#3/0 + GROUND TO NEW PANEL-"CU". CONNECT TO SPARE LUG ON LOAD SIDE OF MAIN BREAKER. FEEDER LENGTH SHALL NOT EXCEED 25FT. POSITION PANEL-"CU" ACCORDINGLY.
- 2 PROVIDE AND INSTALL 3/4" C, 2-#10 + GROUND FROM 30A 2P BREAKER TO EACH COND. UNIT. PROVIDE A LOCAL DISCONNECT FOR EACH UNIT NOT IN LINE OF SIGHT TO PANEL-"CU".
- 3 PROVIDE AND INSTALL A 1/2" CONDUIT FROM COND. UNIT TO RESPECTIVE FURNACE FOR CONTROLS. FOLLOW REFRIGERATION PIPING.
- 4 CAREFULLY DISCONNECT EXISTING FURNACE FOR REMOVAL. PROTECT, MAINTAIN AND/OR REESTABLISH SERVICE DISCONNECT AND CIRCUIT TO NEW FURNACE. MAKE ALL REQUIRED CONNECTIONS.
- 5 PANEL-"CU" FEEDER ROUTING SHALL BE ROUTED UNDERGROUND FROM MAIN BREAKER. ALL EXPOSED CONDUIT SHALL BE RGC TAPED AND WRAPPED WERE IN CONTACT WITH EARTH OR CONCRETE.

# REPRESENTS BUILDING NUMBER

PANEL "CU" (#)		CLASS 120/240V 1Ø 3W		LOCATION OUTSIDE		MAKE/MODEL SQ D NOOD		MAIN BRKR. 200 AMPS		FEED BOTTOM		SURFACE	
								MAIN LUGS ONLY		FEED TOP		FLUSH	
								MAIN SW.		AMPS		DIMENSIONS 20"X30"X6 3/4"	
LOAD NAME	CIR NO	LOAD WATTS	BRK AMP	LOAD/POLE	A	B	CIR NO	LOAD WATTS	BRK AMP	LOAD NAME	CIR NO	LOAD WATTS	BRK AMP
RECEPTACLES	1	-	20	1	-	-	2	30	-	COND. UNIT	4	-	-
SPARE	3	-	-	-	-	-	4	-	-	COND. UNIT	6	-	-
SPARE	5	-	-	-	-	-	8	-	-	COND. UNIT	10	-	-
COND. UNIT	7	-	30	2	-	-	12	-	-	COND. UNIT	14	-	-
-	9	-	-	-	-	-	16	-	-	COND. UNIT	18	-	-
COND. UNIT	11	-	30	2	-	-	20	-	-	COND. UNIT	22	-	-
-	13	-	-	-	-	-	24	-	-	COND. UNIT	26	-	-
COND. UNIT	15	-	30	2	-	-	28	-	-	COND. UNIT	30	-	-
-	17	-	-	-	-	-	32	-	-	PREPARED SPACE	34	-	-
COND. UNIT	19	-	30	2	-	-	36	-	-	PREPARED SPACE	38	-	-
-	21	-	-	-	-	-	40	-	-	PREPARED SPACE	42	-	-
COND. UNIT	23	-	30	2	-	-	-	-	-	-	-	-	-
-	25	-	-	-	-	-	-	-	-	-	-	-	-
PREPARED SPACE	27	-	-	-	-	-	-	-	-	-	-	-	-
PREPARED SPACE	29	-	-	-	-	-	-	-	-	-	-	-	-
-	31	-	-	-	-	-	-	-	-	-	-	-	-
-	33	-	-	-	-	-	-	-	-	-	-	-	-
-	35	-	-	-	-	-	-	-	-	-	-	-	-
-	37	-	-	-	-	-	-	-	-	-	-	-	-
-	39	-	-	-	-	-	-	-	-	-	-	-	-
-	41	-	-	-	-	-	-	-	-	-	-	-	-

TOTAL LOAD/PHASE WATTS - - S.C. INT CAP/BRK. 10K AMPS.  
 FEEDER CONDUCTOR SIZE: - - CONDUIT SIZE - -  
 REMARKS: NEMA 3R WITH HINGED, LOCKABLE, GASKETTED COVER



Engineered Systems Associates  
 Mechanical Engineers

Dwayne Suchweeks  
 1355 East Center - Pocatello, Idaho 83201  
 Phone: (208) 233-0501 Fax: (208) 233-0529 email: esa@engsystems.com

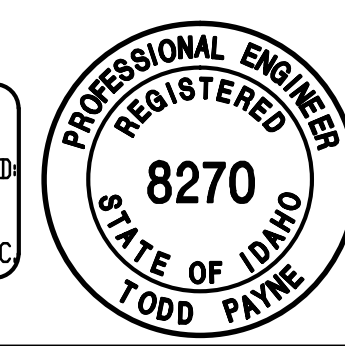
AIR CONDITIONING FOR:  
**BYU-IDAHO VILLAGE APARTMENTS**  
 REXBURG, IDAHO

PROJECT:  
 SHEET TITLE: BLDGS. #1,2,3,4,7,8,9,10,14 & 16 ELECTRICAL PLANS

DRWN. BY: MP  
 OXD. BY: TP  
 JOB NO. 18069  
 DATE: DEC. 2018

SHEET: **E1.1**  
 OF:

ORIGINAL SIGNED BY:  
 TODD E. PAYNE  
 DATED ORIGINAL SIGNED:  
 1-7-2019  
 DN FILE AT:  
 PAYNE ENGINEERING INC



P.E. JOB #1894

**IPAYNE Engineering Inc.**  
 Consulting Engineers  
 1623 E. Center  
 Pocatello, Idaho 83201  
 tel (208) 232-4439  
 www.payneengineeringinc.com

I:\PESERVER\Payne Engineering Data\2018\BYU Village Apartments - 180710\_Working Drawings\1806E1.dwg Jan 07, 2019 - 12:07pm